

SmartCam T1023



Compact and Robust AI Imaging at the Edge



Features

- Supports NVIDIA® Jetson™ TX2 NX, Nano™ modules
- All-in-one design in compact form factor
- Expansion slots for 4G and storage functions
- Suitable for AIoT gateways, general AI applications



Specifications

General	Processor and BSP	NVIDIA Jetson TX2 NX/ Nano
	BSP	Jetpack 4.6.4
	Storage	256GB NVMe, operating temperature from -40°C to 85°C
	Power input	12V DC input with DC Jack
	Certification	CE, FCC, LVD, RoHS, REACH
Physical I/O	Power/Reset	1x DC Jack and reset button (M12 connector)
	Serial port	1x RS232 or UART (Optional, leverage above M12 connector)
	Ethernet	1x LAN port with GBE 10/100/1000M (M12 connector)
	SIM Slot	1x Nano SIM slot
	SMA (Male)	2x SMA connectors for 4G LTE antennas 1x SMA connector for GNSS antenna
	Power LED	1x Power LED indicator
	Waterproof Valve	2x IP65 valve
Infrared LED	Peak Wavelength	850nm
	Radiant Distance	10m
Wireless Network	4G / GPS	Support 4G LTE module
Environment	Operating Temp.	-20°C ~+50°C
	Storage Temp.	-40°C ~+85°C
	Storage Humidity	95% @ 40 °C (non-condensing)
	IP Protection	IP65
Mechanical	Dimension	136.7x93.5x177.4mm (LxWxH) (without wall mount bracket and the antenna)
	Weight	1kg
	Installation	Wall mount, Pole mount

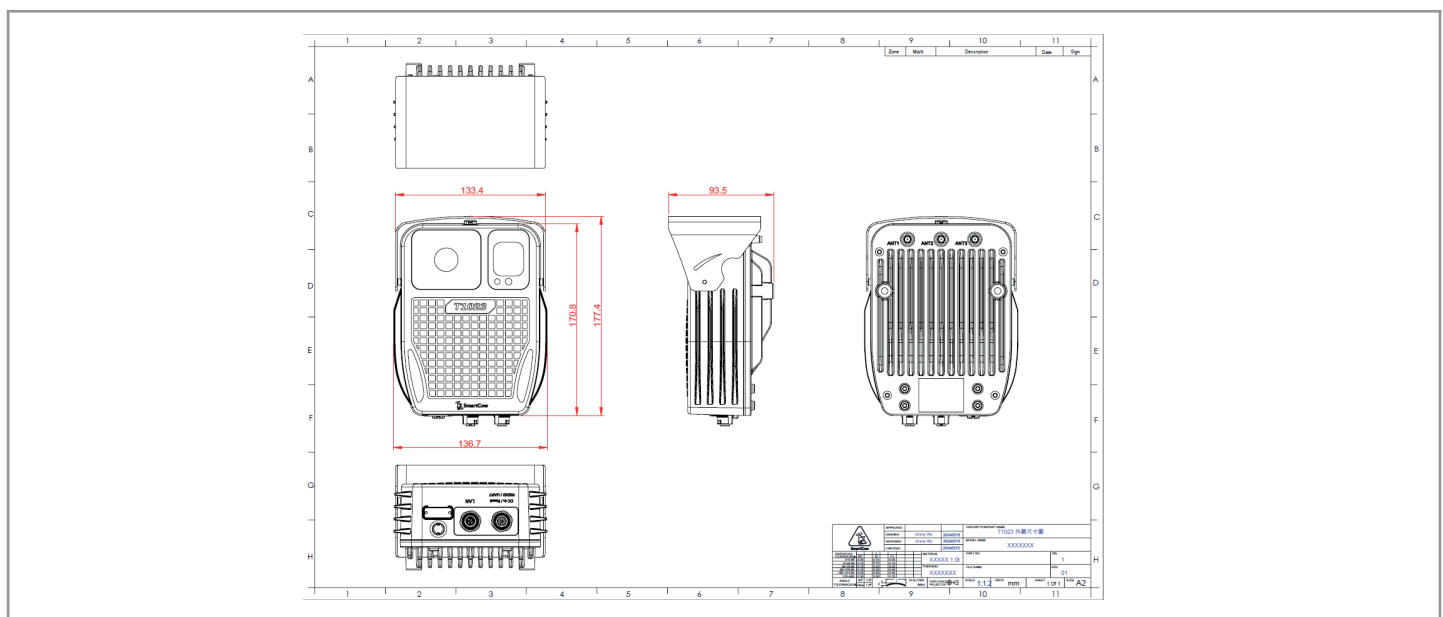
Compatible Jetson Module

	TX2 NX	Nano
AI Performance	1.33 TFLOPS	472 GFLOPS
CPU	Dual-Core NVIDIA Denver 2 64-Bit CPU and Quad-Core Arm® Cortex®-A57 MPCore processor	Quad-core ARM Cortex-A57 MPCore processor
GPU	NVIDIA Pascal™ Architecture GPU with 256 CUDA cores	NVIDIA Maxwell architecture with 128 NVIDIA CUDA cores
Memory	4GB 128-bit LPDDR4 @ 51.2 GB/s	4 GB 64-bit LPDDR4 @25.6 GB/s
Storage	16 GB eMMC 5.1	

Camera

	Specification	IMX335 (Rolling shutter)
Image Sensor	Image Sensor	SONY
	Max. Image Resolution	2560H x 1920V
	Max. Frame Rate	30fps(2560x1920)
	WDR	HDR
	Day/Night Mode	Day/Night/Auto
Lens	Effective Focal Length	3mm
	Field of View	D140.7°×H107°×V77.8°
	Focus Control	Fixed M12 Lens
	Aperture	F2.0
	Iris Control	Fixed type

Mechanical



Ordering Information

Model Name	Description
T1023-TN04-IMX335	T1023 w/ TX2 NX 4GB, 256G NVMe SSD, 12V DC, 60W Adapter, -20~50°C
T1023-NN04-IMX335	T1023 w/ Nano 4GB, 256G NVMe SSD 12V DC, 60W Adapter, -20~50°C

Packing List

Item	Description	Qty
AI camera	Main unit	1
Antenna	Combo antenna for LTE and GPS	1
Adapter	12V 5A, 60W	1
Power cord	US, EU or UK version	1
Power & reset cable	M12 cable with DC Jack and reset button	1
Ethernet cable	M12 cable with RJ45 port	1
Camera bracket	Wall mount bracket	1

Accessories (Optional)

Part Number	Description
1Y0701800200LI	US Power Cord
1Y0701800100LI	EU Power Cord
1Y0701830400HY	UK Power Cord
TBD	M.2 B-key 3042 LTE module: Quectel EM060K-EA
TBD	M.2 B-key 3042 LTE module: Quectel EM060K-NA
TBD	M12 cable with DB9 port
TBD	M12 cable with UART signal
1M1200004B0000	Pole mount bracket